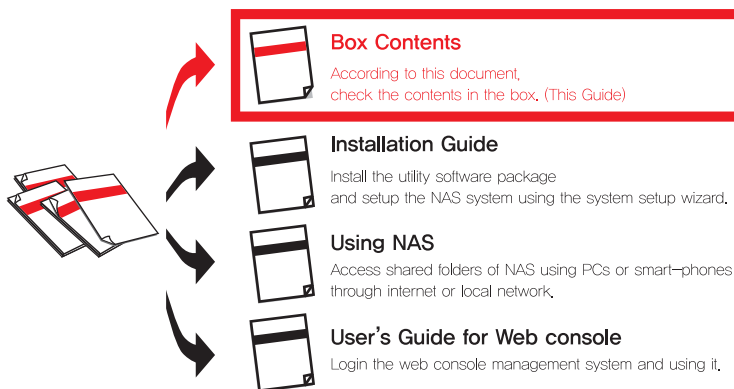
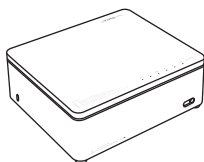


Box Contents

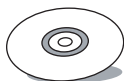
Thank you for buying ipTIME NAS I !!!



※ The box contents below are only for reference.



< NAS system >



< Software CD >



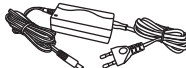
< Manuals >



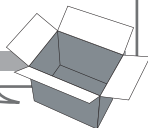
< USB cable >



< LAN cable, 2m >

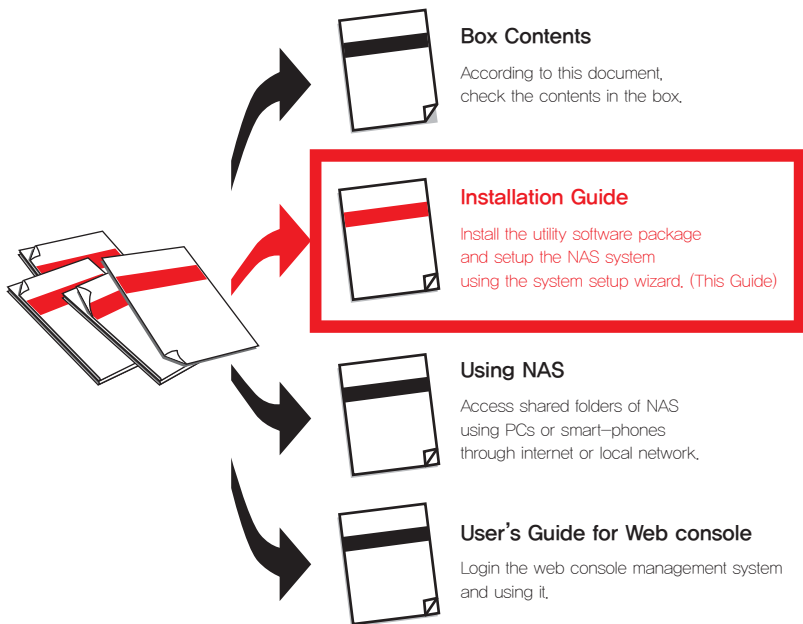


< DC Adapter >



Installation Guide

Thank you for buying ipTIME NAS 1 !!!
The utility software for NAS 1 can be run on
Windows 2000, XP, Vista and Windows 7 OS environment.
In other OS like Mac OS or Linux, installation can be done using web browser manually.

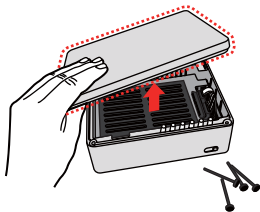


One. Installing the HDD

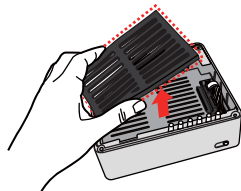
Install HDD as the pictures below.



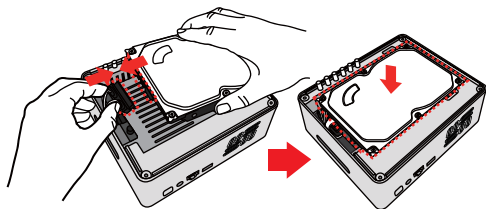
1 Unlock the foot screws.



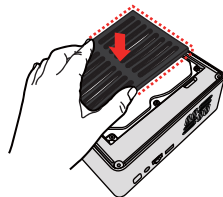
2 Open the top cover.



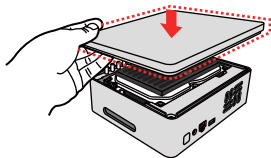
3 Remove the PAD for slim HDD.



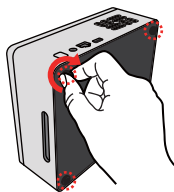
4 Connect SATA cables to HDD and insert the HDD.



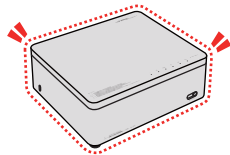
5 Put the PAD on the top for your needs.



6 Close the top cover.



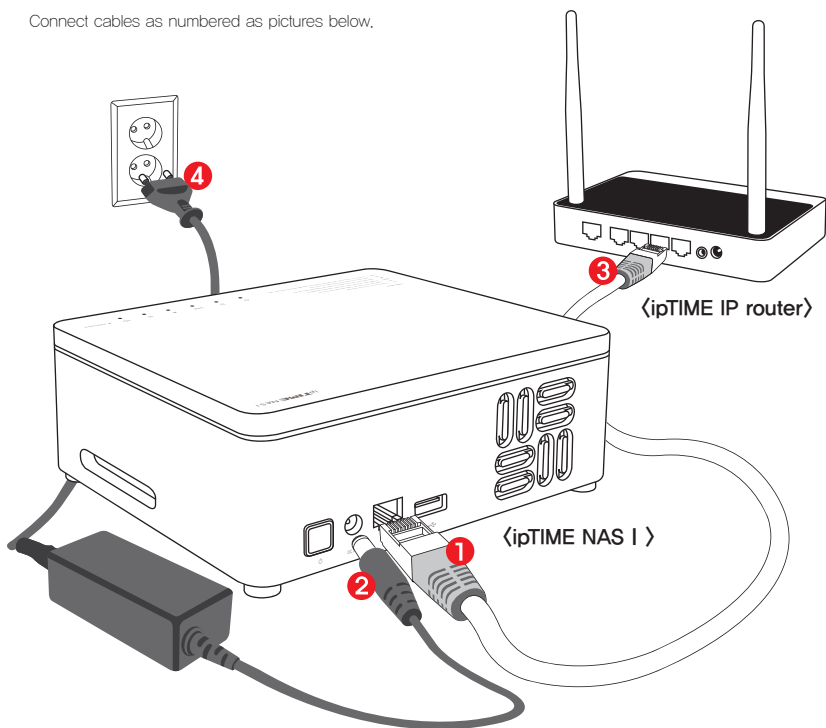
7 Lock the foot screws.



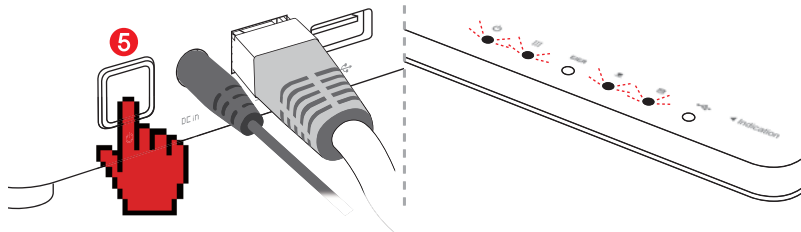
8 Done.

Two. Connecting cables

Connect cables as numbered as pictures below.



Use ipTIME IP router with firmware higher than 7.40 when connect NAS to network.

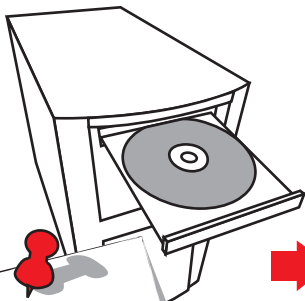


Click Power button on the rear panel of NAS and check the LEDs as above.

Three. Installing Utility Software

Some Stages are omitted.

1 Insert CD



The utility software for NAS 1 can be run on Windows 2000, XP, Vista and Windows 7 OS environment. In other OS like Mac OS or Linux, installation can be done using web browser manually.

2 Install the Utility



Click [ipTIME NAS Utility Install] when the CD launcher program is started.

3 Start Installation



Click [Next] to start the installation.

Click

4 Finish Installation



Click [Finish] when the installation is finished.

Click

Four. Configuring the NAS

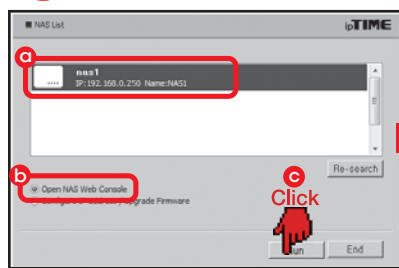
Some of the configuration stages are omitted.

1 Run ipTIME NAS console



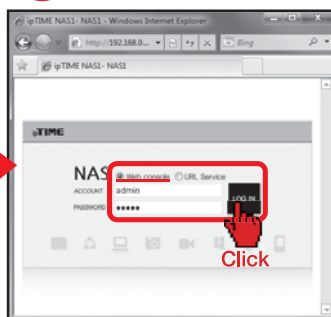
Double Click [ipTIME NAS console] in the Desktop screen.

2 Select NAS



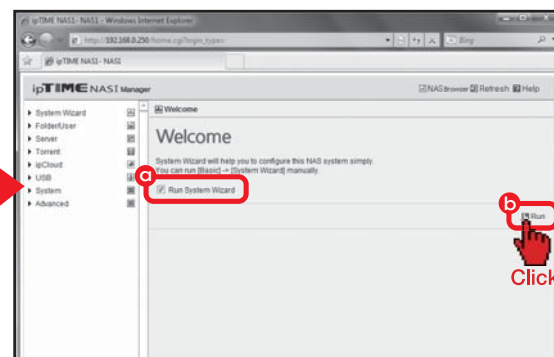
- a Choose NAS from searching list.
- b Choose [Open NAS Web Console].
- c Click [Run] button.

3 Login



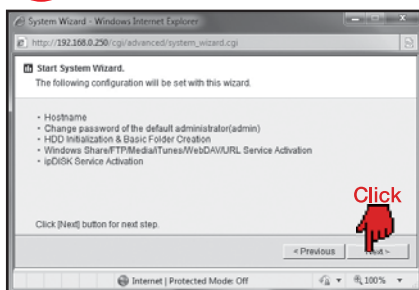
Login to the selected NAS as a "admin" account.
 * The default password for admin is 'admin'.

4 Run System Wizard



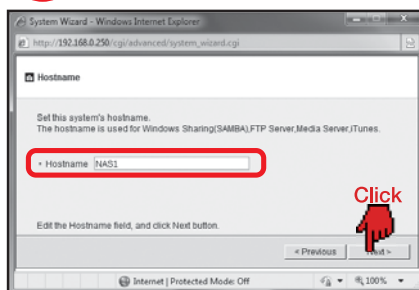
- a Check [Run System Wizard].
- b Click [Run] to start the wizard.

5 Start System Wizard



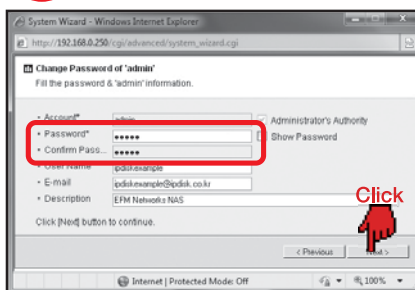
Click [Next] button to begin the wizard.

6 Enter the hostname



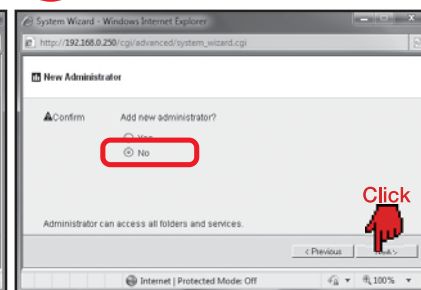
Enter the hostname wanted and click [Next] button.

7 Change the default password for admin



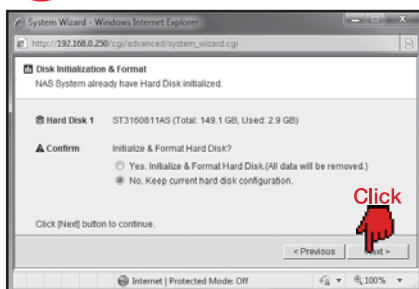
Change the password for admin and click [Next] button.

8 Add a new administrator



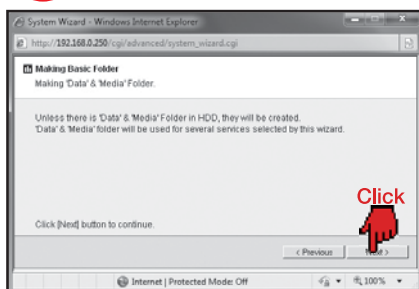
Choose Yes or No for adding a new administrator account and click [Next] button.
 * Adding a new administrator account can be done later. Choose "No" and continue the wizard.

9 Initialize and Format Disk



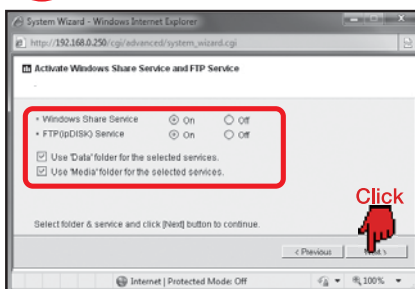
Choose Yes or No for initialize & Format Hard Disk and click [Next] button.
 * Formatting is not needed if the disk is already formatted.

10 Creating default folders for service



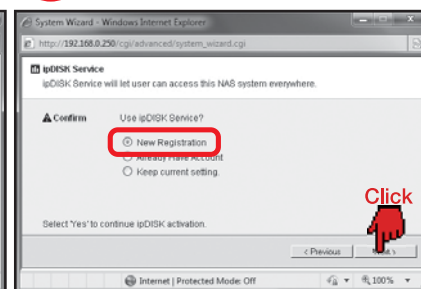
Be sure the default folders "Data" and "Media" for service will be created.

11 Activate the shared folders for Windows and FTP



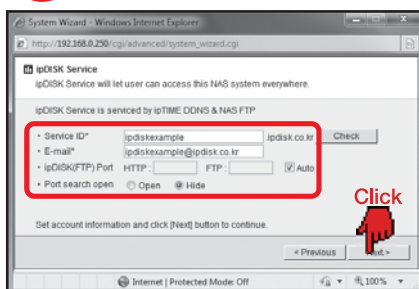
Turn on the FTP and Window service and click [Next] button.

12 Register ipDISK service



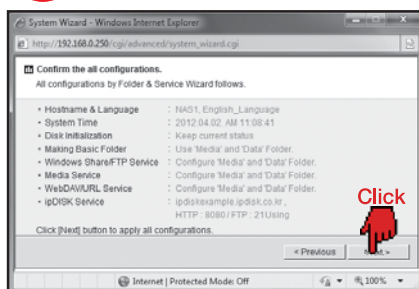
Select [New Registration] for ipDISK service and click [Next] button.

13 Configure ipDISK service



Fill Service ID and E-mail. Select ipDISK(FTP) port as an Auto.
 * To select ipDISK port as an Auto, use ipTIME IP router with firmware higher than 7.40.

14 Finish the configuration



Review the configurations and click [Next] button to finish.

Appendix. Management with Web Console

The configuration done by system wizard can be reviewed by the web console.

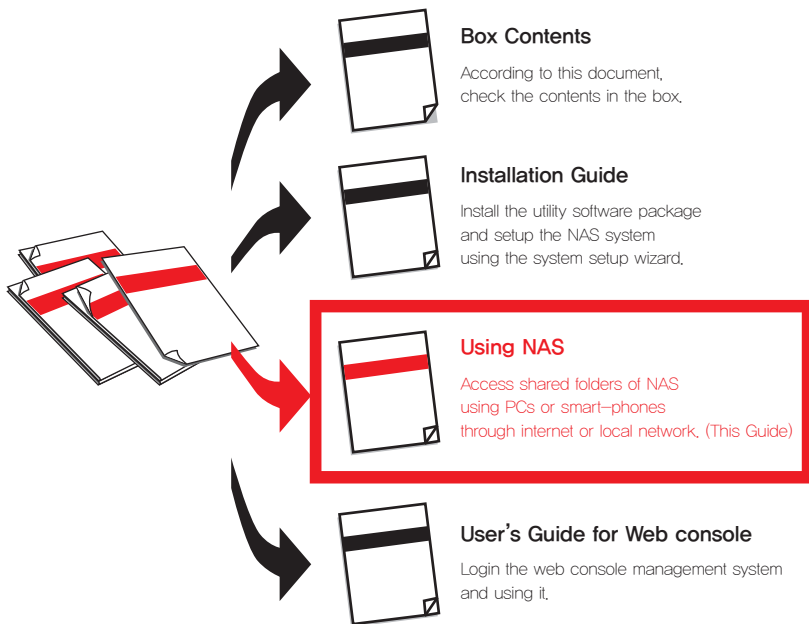
The image shows two overlapping screenshots of the iptime NAS web console. The top-left screenshot shows the login page with a red box around the 'Web console' link, the 'admin' username field, a password field with masked characters, and a 'LOG IN' button. A red hand icon points to the 'LOG IN' button with the word 'Click' written below it. The top-right screenshot shows a browser window displaying the 'System Information' page. The page has a navigation menu on the left and a main content area with system details.

System Information	Hostname	NAS1
	Language	English
	Firmware	1.1.14 (Fri Mar 9 14:54:20 2012)
	Network Information	192.168.0.101 (Wire Connection 100 Mbps)
	System Time	2012-04-02 AM 11:15:24
	ipDISK Service	Registered(ipdiskexample.ipdisk.co.kr_FTP:21,HTTP:8080)
	ipcloud_Server_Info	Off(ipdiskexample.ipdisk.co.kr:873)
	ipcloud_Client_Info	On(ipcloud_Waiting)
	Windows Share	On (0 Connections)
	FTP Info	On (0 Connections)
	Media Info	On (0 Connections)
	iTunes Info	On (0 Connections)
	Torrent Information	Off
	WebDAV Service	On(http://ipdiskexample.ipdisk.co.kr:13564/dav)
	URL Service	On(http://ipdiskexample.ipdisk.co.kr:13564/list)

- ※ Click [iptime NAS Console] icon to login to the web console.
- ※ Adding a user, creating a folder and other jobs can be done in the web console.
- ※ Refer "User's Guide for Web Console Management" for more detail information.

Using NAS

Thank you for buying ipTIME NAS I !!!
The utility software for NAS I can be run on Windows 2000, XP, Vista and windows 7 OS environment, In the smart-phone environment ipTIME NAS I can be easily accessed using smart-phone apps also available.



Contents.

- This guide contains topics as below.
- Please choose the topic about the service wanted to be used.



One. LEDs & Buttons

It explains how to use Power button, Reset/USB button & LEDs.



Two. Windows File Sharing with NAS

It explains how to use NAS in windows file sharing environment. This is the most frequently used method of using NAS in local network.



Three. ipDISK service

It explains how to use ipDISK service based on FTP and DDNS to access NAS folders. ipDISK is used to access NAS folder outside of local network through the internet.



Four. NAS Browser in Web Console (In local network)

It explains how to use NAS browser within the local network. The NAS browser is embedded in its web console and can access all the files and folders in NAS. The functions of NAS browser are Copying, removing, renaming and also PC transferring including open URL.



Five. NAS Browser in Web Console (Through the internet)

It explains how to use NAS browser through the internet. The NAS browser is embedded in its web console and can access all the files and folders in NAS. The functions of NAS browser are Copying, removing, renaming and also PC transferring including open URL.



Six. URL service

It explains how to access NAS folders with existing web browser like the explorer or safari.



Seven. Using Public URL

It explains how to getting the public URL string for the file stored in NAS. Once a file is assigned through the public URL string, it can be accessed from anywhere through internet.

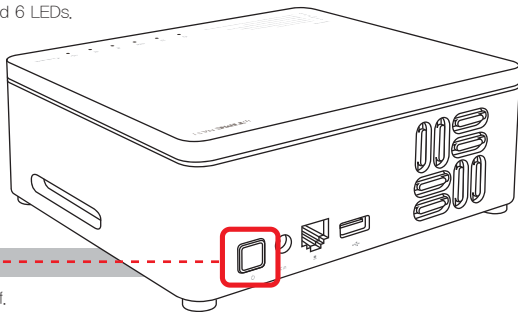


Eight. Smart-phone ipDISK service

It explains how to use NAS folders with smart-phone APP, ipDISK.

One. LEDs & Buttons



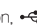
This system has 2 buttons and 6 LEDs.

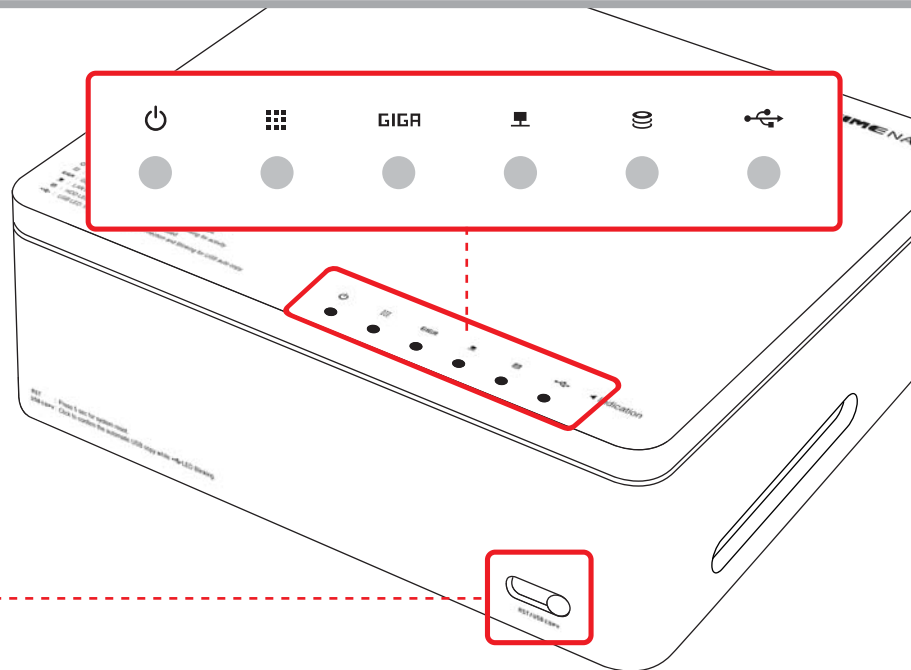


Power button

- It is for system power on/off.

RST/USB COPY Reset/USB Copy button

- To make system with factory default configuration,
 1. Keep this button pushed for more than 5 seconds.
 2.  Ready LED shows fast blinking.
 3. After factory default is done, NAS will be restarted.
- To run USB Copy operation,
 1. Connect USB storage device.
 2.  USB LED will show fast blinking.
 3. During fast blinking, push this button.
 4. Predefined USB Copy operation will be started.
 5. During USB Copy operation,  USB LED shows slow blinking.



Power LED

- It show the status of NAS power.
- On – Power On.
- Off – Power Off.

Ready LED

- Ready LED shows the status of NAS Services.
- On – All NAS services are available.
- Slow blinking – Booting or Shutting down(All NAS services are unavailable.)
- Fast blinking – Running factory default.
- Off – Booting or HDD Power Save Mode.

GIGABIT Gigabit LED

- Gigabit LED shows the gigabit ability of LAN Port Link
- On – The link of LAN port is Gigabit Speed.
- Off – The link of LAN port is not Gigabit Speed.

LAN LED

- LAN LED shows the link status of LAN port.
- On – The link of LAN port is on.
- Off – The link of LAN port is off.

HDD LED

- HDD LED shows the status of internal HDD.
- On – NAS recognized the internal HDD.
- Blinking – Internal HDD is being accessed.
- Off – NAS can't recognized the internal HDD or HDD Power Save Mode.

USB LED

- USB LED shows the status of USB MEMORY port.
- On – USB storage device is connected and ready to use.
- Fast blinking
 - Wait USB Copy event for 10 seconds.
 - To run USB Copy, push the **RST/USB COPY** button.
- Slow blinking – Now USB copy action is running.
- Off – No USB device is connected.

TWO. Windows File Sharing with NAS

※Refer [User's Guide for Web console] for more information about the web console.

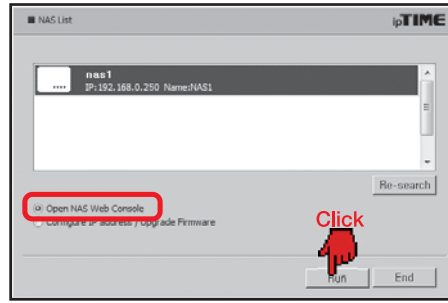
A. Before opening the NAS folders... To use NAS in windows file sharing, following setup need to be done through the web console.

1 Running ipTIME NAS Console



Double click the [ipTIME NAS Console] icon in the desktop window.

2 Opening NAS web console



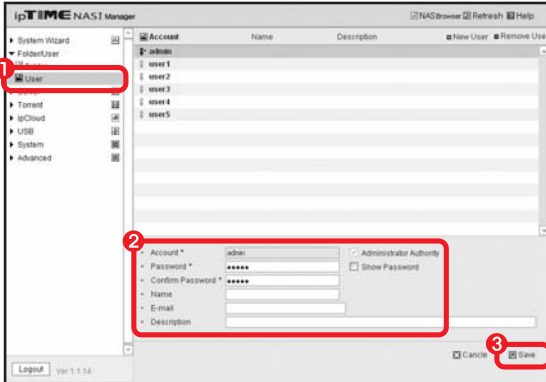
Select the NAS from the searched list. Choose [Open NAS Web Console] and click the [Run].

3 Login



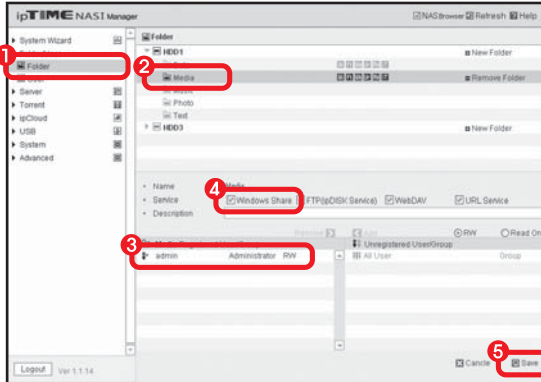
Choose Web console and enter the user account and password. Click the [LOG IN] to start the web console.

4 Checking Accounts



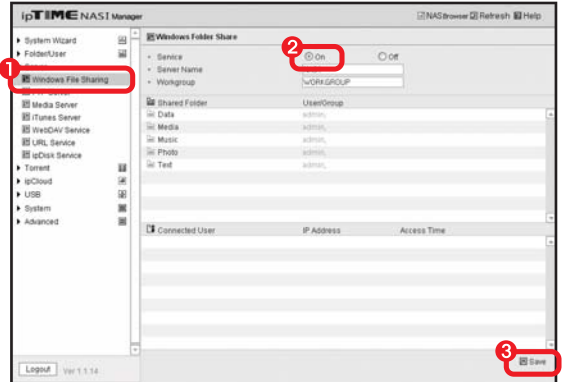
1 Select the menu [Folder/User] > [User] from the left menu browser.
2 Check the user accounts.
3 Click [Save] to finish setup.

5 Checking the Folder for Windows File Sharing



1 Select the menu [Folder/User] > [Folder] from the left menu browser.
2 Select the folder to be used for windows file sharing.
3 Check the user for this folder.
4 Make sure the Windows Share is checked for the selected folder.
5 Click [Save] to finish setup.

6 Checking the Service for Windows File Sharing



1 Select the menu [Server] > [Windows File Sharing] from the left menu browser.
2 Make the service as on.
3 Click [Save] to finish setup.

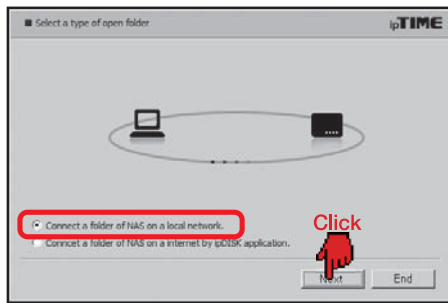
B. Accessing Windows Shared Folder

1 Running ipTIME NAS Folder



Double Click [ipTIME NAS Folder] icon in the desktop.

2 Selecting the local network



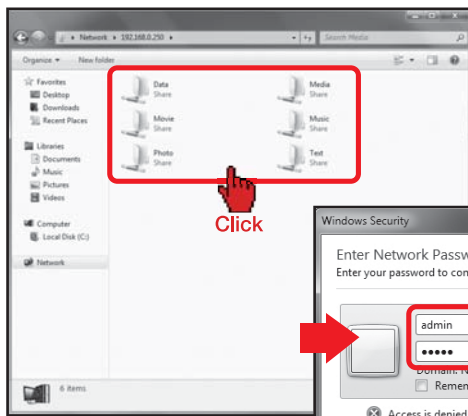
Select [Connect a folder of NAS on a local network] and click [Next].

3 Selecting NAS



Select NAS from the searching list and click [Next].

4 Opening a Folder



Double click the folder to be opened.

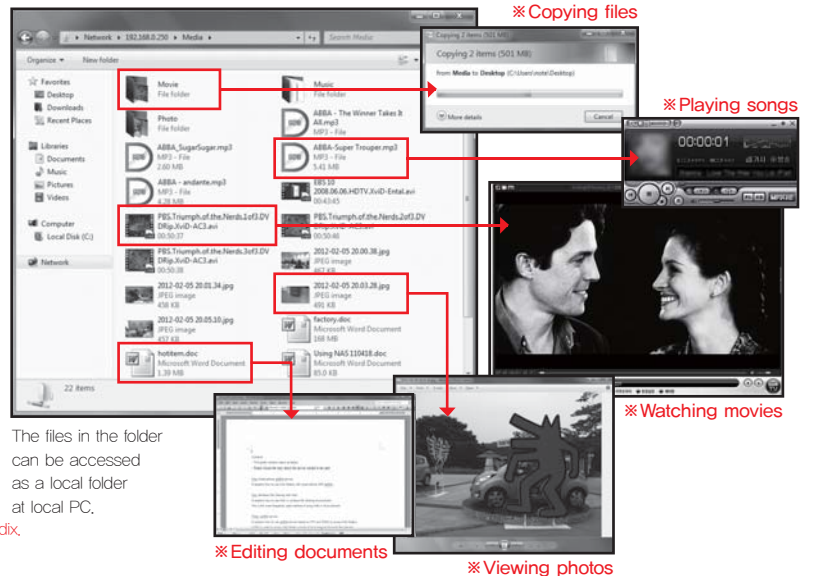
5 Login



Enter the user name and the password.

※ User management can be done through Web console of NAS. See the appendix.

6 Using NAS



The files in the folder can be accessed as a local folder at local PC.

※ Copying files

※ Playing songs

※ Watching movies

※ Viewing photos

Three. ipDISK service

※ Refer [User's Guide for Web console] for more information about the web console.

A. Before using ipDISK service...

To use ipDISK service, following setup need to be done through the web console.

1 Running ipTIME NAS Console



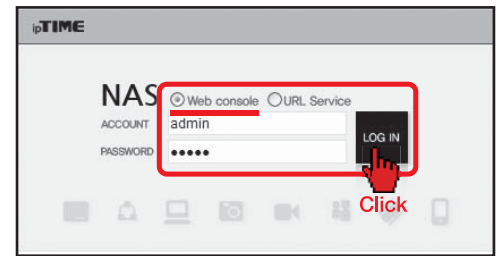
Double click the [ipTIME NAS Console] icon in the desktop window.

2 Opening NAS web console



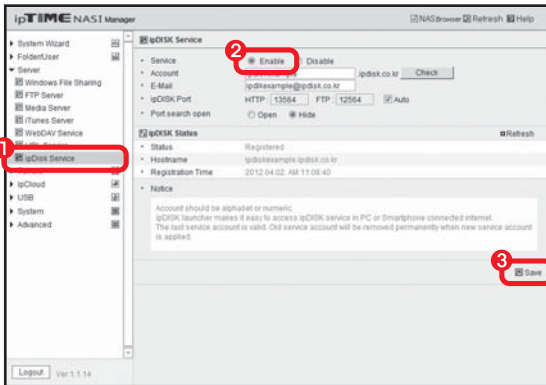
Select the NAS from the searched list. Choose [Open NAS Web Console] and click the [Run].

3 Login



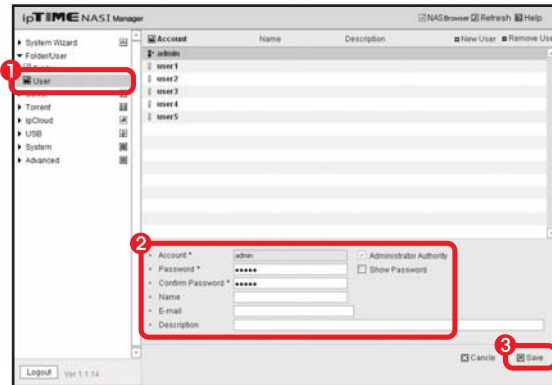
Choose Web console and enter the user account and password. Click the [LOG IN] to start the web console.

4 Checking ipDISK service



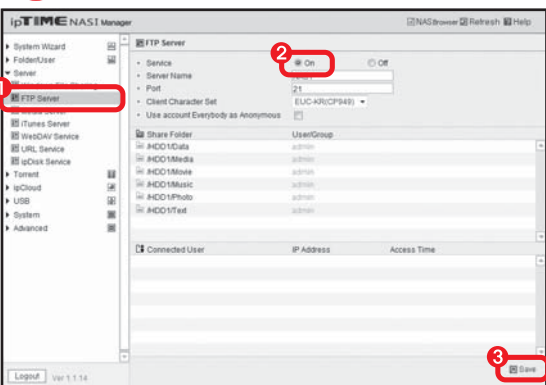
1 Select the menu [Server] > [ipDISK Service] from the left menu browser.
2 Make the service as on.
3 Click [Save] to finish setup.

5 Checking Accounts



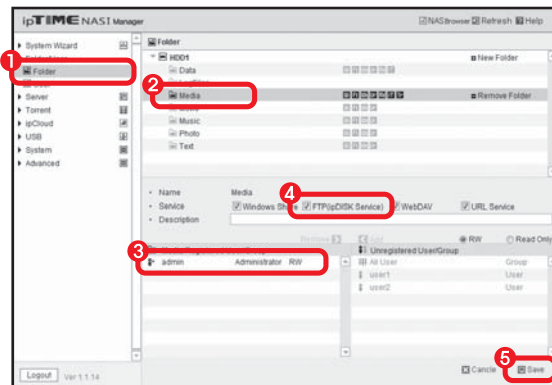
1 Select the menu [Folder/User] > [User] from the left menu browser.
2 Check the user accounts.
3 Click [Save] to finish setup.

6 Checking FTP Server for ipDISK service



1 Select the menu [Server] > [FTP Server] from the left menu browser.
2 Make the service as on.
3 Click [Save] to finish setup.

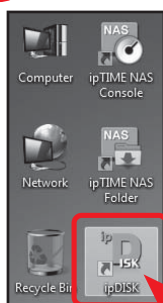
7 Checking the Folder for FTP



1 Select the menu [Folder/User] > [Folder] from the left menu browser.
2 Select the folder to be used for ipDISK(FTP) service.
3 Check the user for this folder.
4 Make sure the FTP(ipDISK Service) is checked for the selected folder.
5 Click [Save] to finish setup.

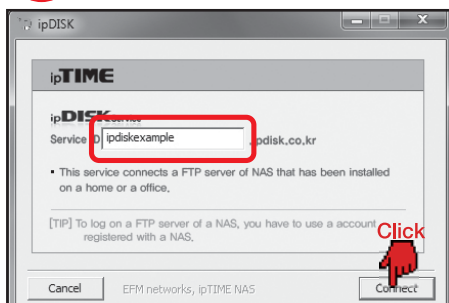
B. Using ipDISK Service

1 Running ipDISK



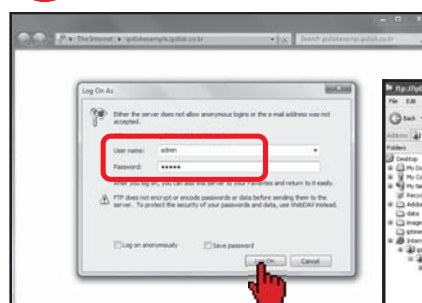
Double Click [ipDISK] icon in the desktop.

2 Entering the service



Enter the service account and click [Connect].

3 Login



Enter the user name and the password and click [Log on].

4 Using NAS



※ In the case when the executing files cause problems, copy the file to the local PC and use it.

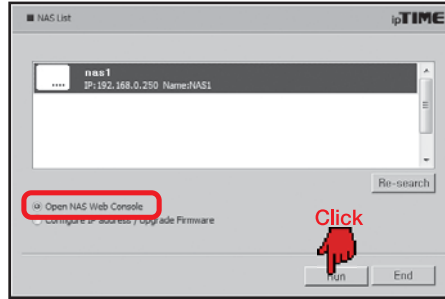
Four. NAS Browser in Web Console (In local network)

1 Running ipTIME NAS Console



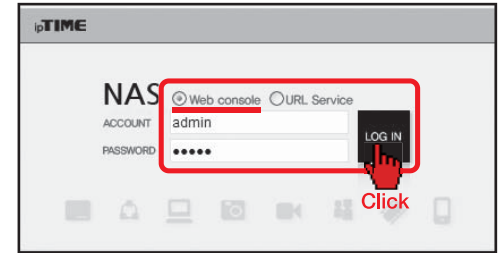
Double click the [ipTIME NAS Console] icon in the desktop window.

2 Opening NAS web console



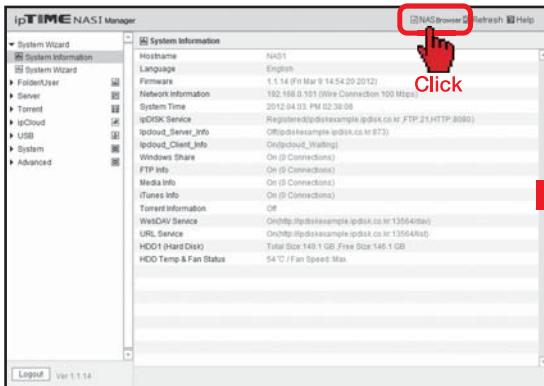
Select the NAS from the searched list. Choose [Open NAS Web Console] and click the [Run].

3 Login



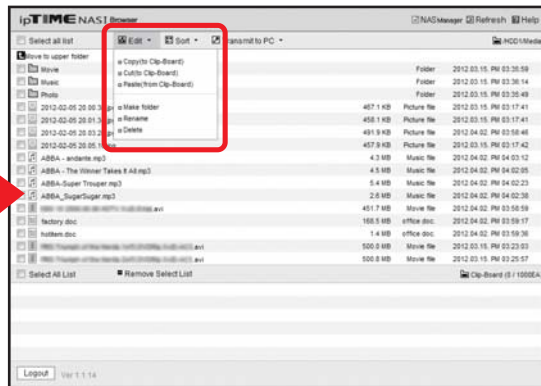
Choose Web console and enter the user account and password. Click the [LOG IN] to start the web console.

4 Changing to NAS Browser mode



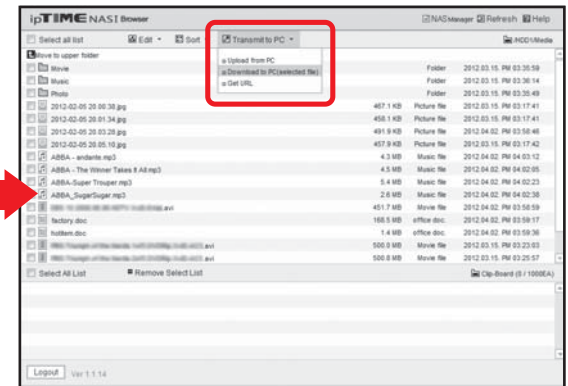
Click [NAS Browser] to enter NAS browser mode.

5 Using NAS Browser



Use top-down menu to edit or sort files and folders.

6 PC transfer

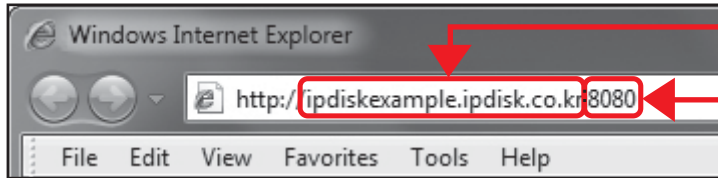


Use the [File Transfer] menu to up/download files to/from PC.

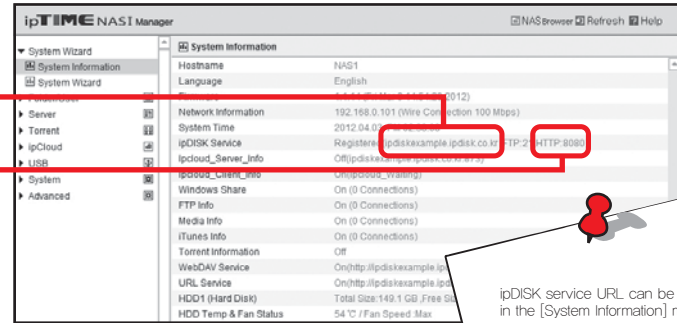
[Notice] The file size is limited to 2GB when upload a file from PC.

Five. NAS Browser in Web Console (Through the internet)

1 Connecting Web Console via the internet



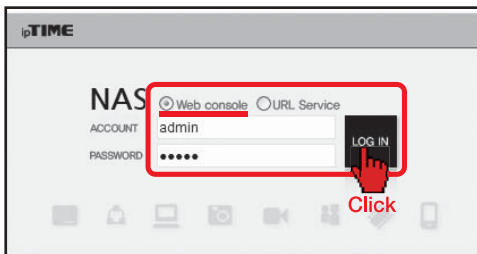
Enter the ipDISK service URL and HTTP port number in the address field of internet browser as above.



ipDISK service URL can be found in the [System Information] menu.

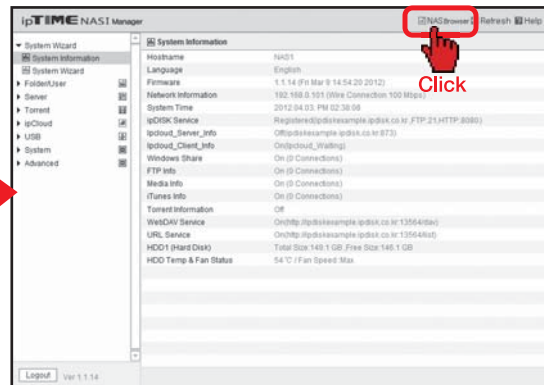
The HTTP port number can be omitted when port number is 80.

2 Login



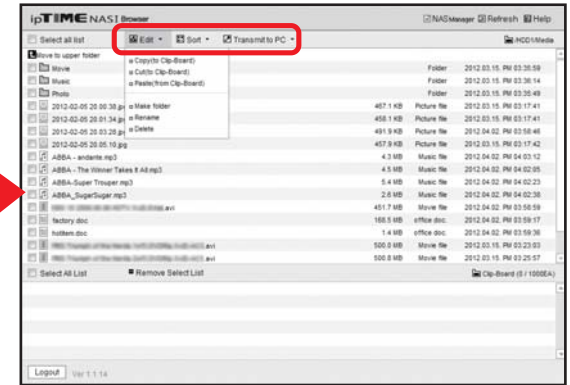
Enter the user account and the password. Click [LOG IN] to open the web console.

3 Changing to NAS Browser mode



Click [NAS Browser] to enter NAS browser mode.

4 Using NAS Browser



Use top-down menu to edit or sort files and folders.

[Notice] The file size is limited to 2GB when upload a file from PC.

Six. URL service

A. Before using URL service...

To use URL service, following setup need to be done through the web console.

1 Running ipTIME NAS Console



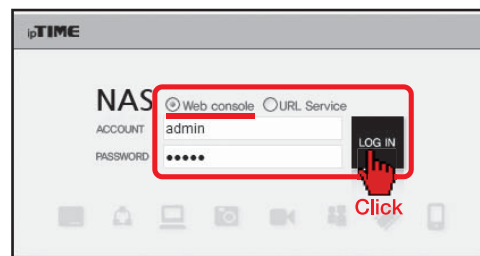
Double click the [ipTIME NAS Console] icon in the desktop window.

2 Opening NAS web console



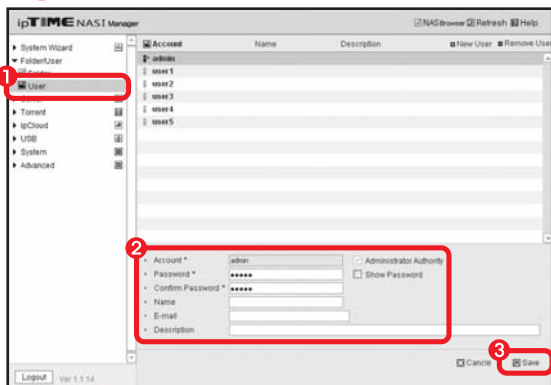
Select the NAS from the searched list. Choose [Open NAS Web Console] and click the [Run].

3 Login



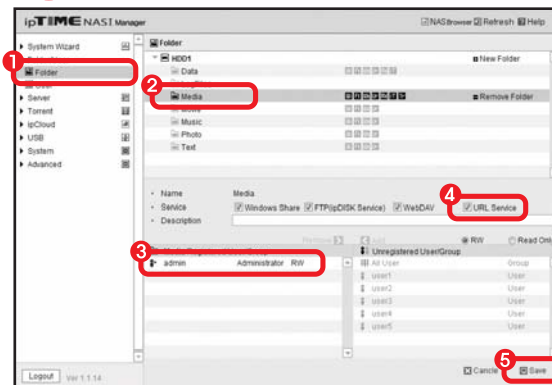
Choose Web console and enter the user account and password. Click the [LOG IN] to start the web console.

4 Checking Accounts



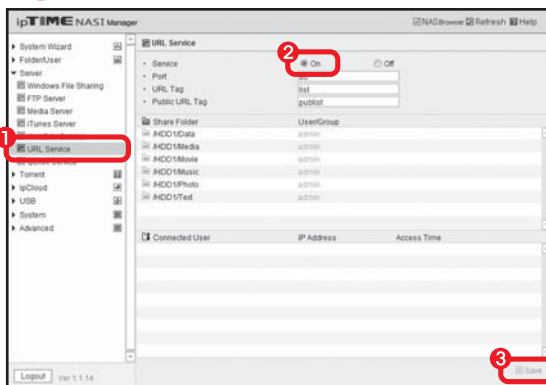
1 Select the menu [Folder/User] > [User] from the left menu browser.
2 Check the user accounts.
3 Click [Save] to finish setup.

5 Checking the Folder for URL service



1 Select the menu [Folder/User] > [Folder] from the left menu browser.
2 Select the folder to be used for URL service.
3 Check the user for this folder.
4 Make sure the [URL Service] is checked for the selected folder.
5 Click [Save] to finish setup

6 Checking URL service



1 Select the menu [Server] > [URL Service] in the left menu browser.
2 Make the service as on.
3 Click [Save] to finish setup.

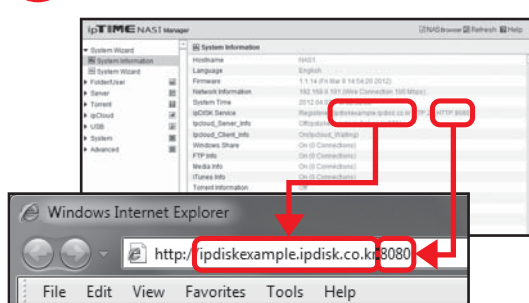
B. Using URL Service

1 Running [ipTIME NAS Console] (in the local network)



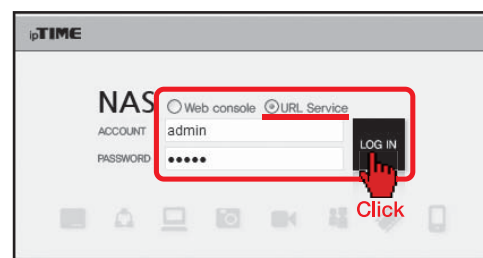
Double click [ipTIME NAS Console] in the desktop window. Select the NAS and click [Run] from the NAS list

2 Connecting Web Console (via the internet)



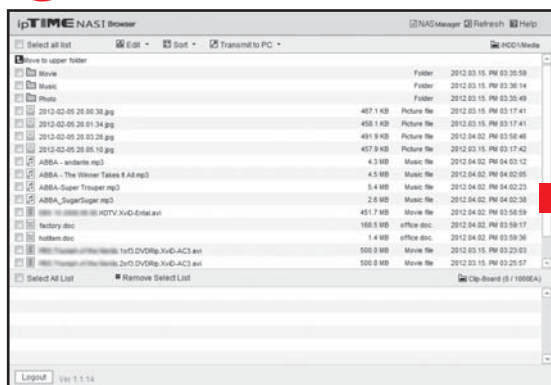
Enter the ipDISK service URL and HTTP port number in the address field of internet browser as above.

3 Login



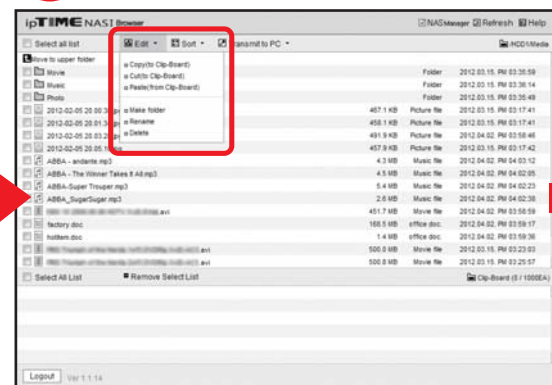
Select URL service radio button and enter the user account and the password. Click [LOG IN] to open the web console.

4 Connecting URL Service



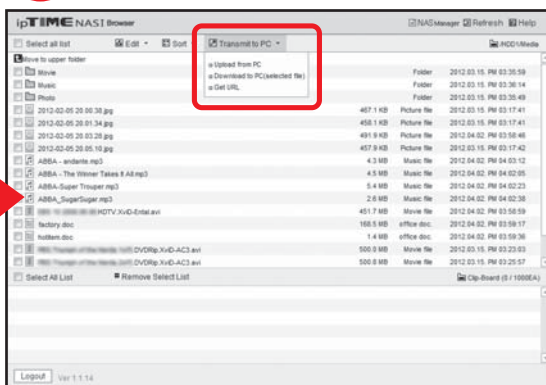
Click [NAS Browser] to enter NAS browser mode.

5 Using NAS Service



Use top-down menu to edit or sort files and folders.

6 PC transfer



Use the [File Transfer] menu to up/download files to/from PC.

[Notice] The file size is limited to 2GB when upload a file from PC.

Seven. Using Public URL

1 Running ipTIME NAS Console



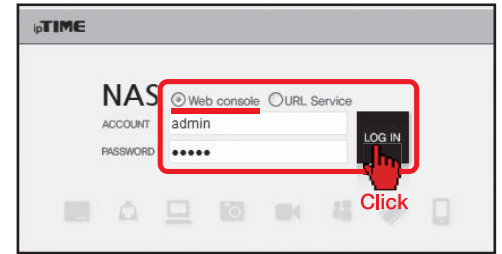
Double click the [ipTIME NAS Console] icon in the desktop window.

2 Opening NAS web console



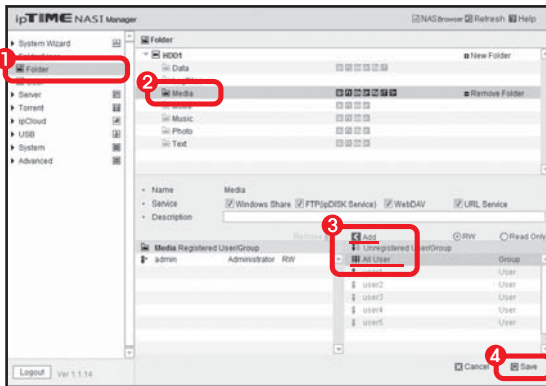
Select the NAS from the searched list. Choose [Open NAS Web Console] and click the [Run].

3 Login



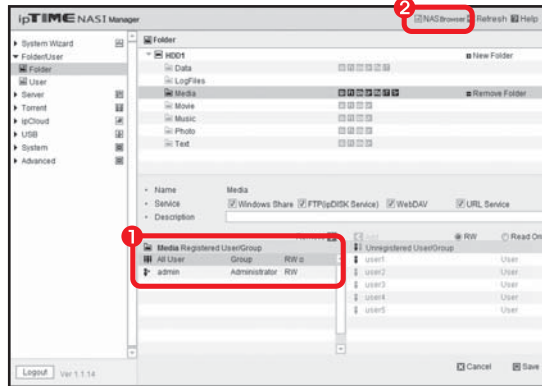
Choose Web console and enter the user account and password. Click the [LOG IN] to start the web console

4 Adding All User Attribute



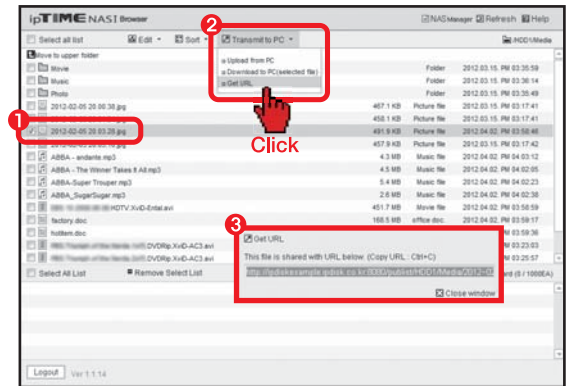
- 1 Select the menu [Folder/User] > [Folder] from the left menu browser.
- 2 Select the folder to be used for Public URL service.
- 3 Add [All User] for the user list for the folder
- 4 Click [Save] to finish setup.

5 Changing to NAS Browser mode



- 1 Make sure [All User] is added to the user list.
- 2 Click [NAS Browser] to enter NAS browser mode.

6 Getting Public URL



- 1 Select the file for getting public URL.
- 2 Run [File Transfer] > [Get URL of file] from the top-down menu.
- 3 The public URL string for selected file will be displayed in popup window.

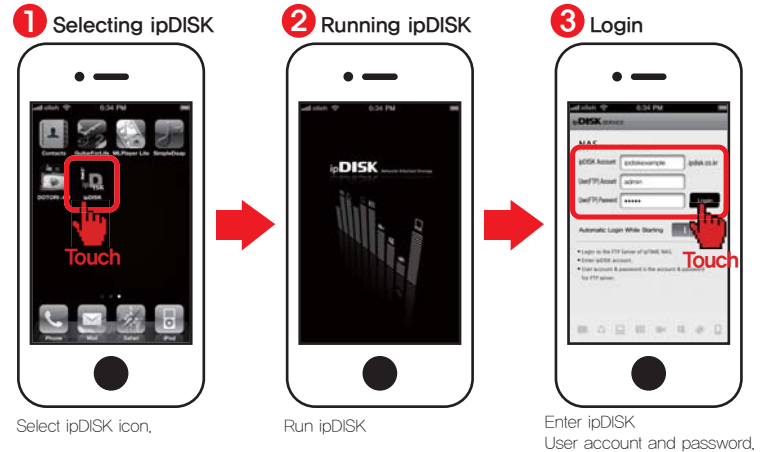
Eight. Smart-phone ipDISK service

※ ipDISK APP can be downloaded from the Android market and Apple App-store using the searching keyword "ipDISK".

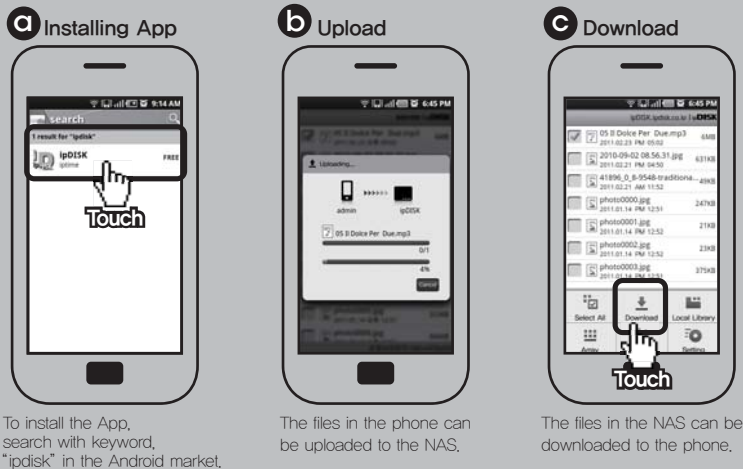
A. Android Phone



B. iPhone



[Using Examples]



[Using Examples]



※ The figures on smart-phone can be different.

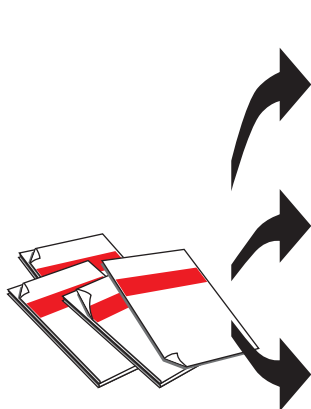
User's Guide for Web console

Thank you for buying ipTIME NAS I !!!

All control and configuration for NAS can be done with web console management system.

On-line help is also included in web console.

See the on-line help when if you have any question using NAS.



Box Contents

According to this document, check the contents in the box.



Installation Guide

Install the utility software package and setup the NAS system using the system setup wizard.



Using NAS

Access shared folders of NAS using PCs or smart-phones through internet or local network.



User's Guide for Web console

Login the web console management system and using it. (This Guide)

One. Login to Web console

1 Run ipTIME NAS console



Double Click [ipTIME NAS console] in the Desktop screen.

2 Select NAS



- 1 Choose NAS from searching list.
- 2 Chose [Open NAS Web Console].
- 3 Click [Run] button.

3 Login

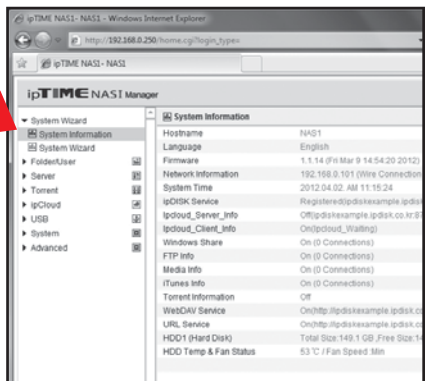


Login to the selected NAS

as a "admin" account.

※ The default password for admin is 'admin'.

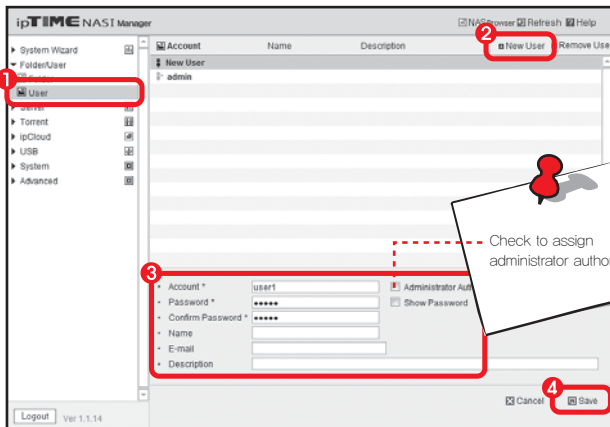
4 Web console management system



Web console management is displayed as Above.

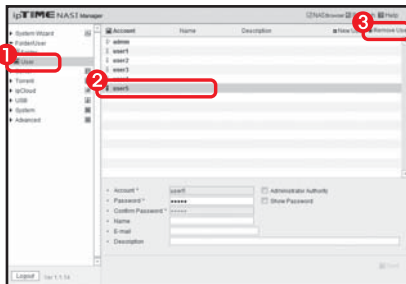
Two. User Management

A. Adding a User



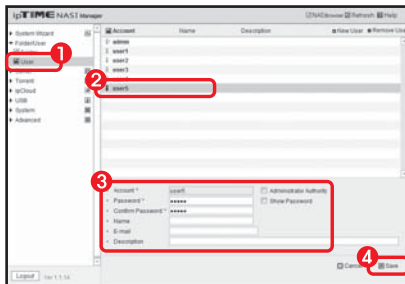
- 1 Select [Folder/User] > [User] menu.
- 2 Click [New User] icon then the user account field will be activated.
- 3 Enter account name and password for the new user.
- 4 Click [Save].

B. Deleting a User



- 1 Select [Folder/User] > [User] menu.
- 2 Select a user for deleting.
- 3 Click [Remove User] icon to delete.

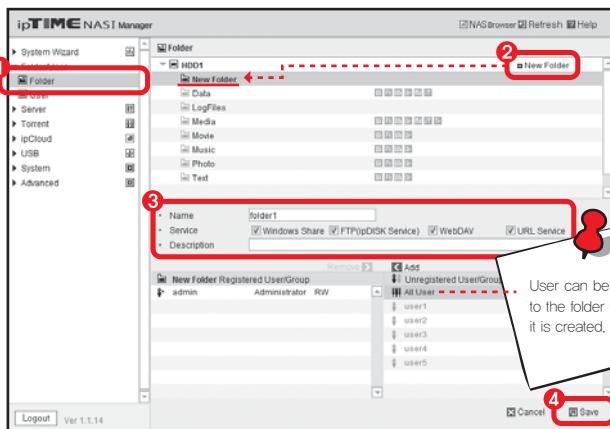
C. Changing Information



- 1 Select [Folder/User] > [User] menu.
- 2 Select a user for changing.
- 3 Change the field wanted.
- 4 Click [Save].

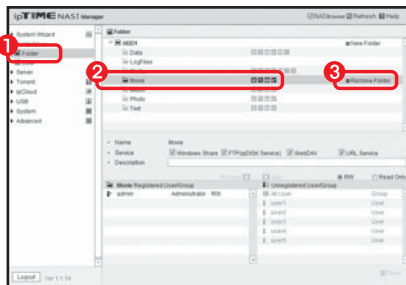
Three. Folder management

A. Creating a Folder



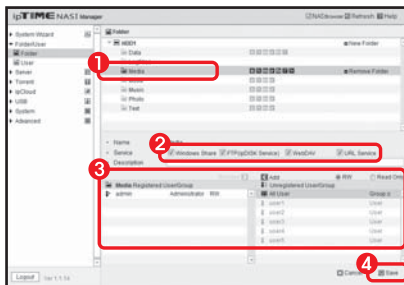
- 1 Select [Folder/User] > [Folder] menu.
- 2 Select the partition where a folder will be created and click [New Folder] icon. New Folder will be created and information field for it will be activated below.
- 3 Enter a name for new folder and check the service for it.
- 4 Click [Save].

B. Deleting a Folder



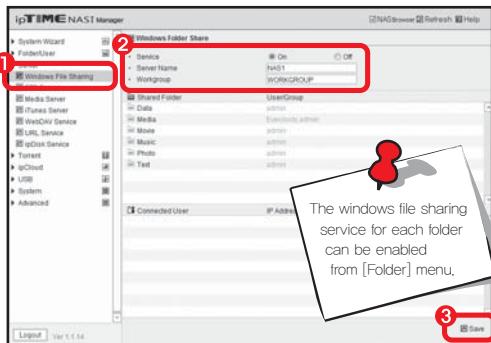
- 1 Select [Folder/User] > [User] menu.
- 2 Select a folder for deleting.
- 3 Click [Remove User] icon to delete.

C. Changing Information



- 1 Select [Folder/User] > [Folder] menu.
- 2 Select a folder for changing.
- 3 Change the field wanted.
- 4 Click [Save].

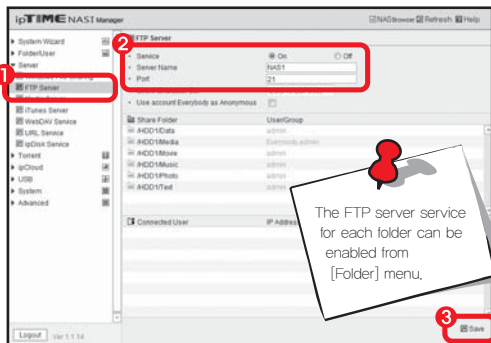
Four. Windows/FTP server management



A. Windows File Sharing

- 1 Select [Server] > [Windows File Sharing] menu.
- 2 Turn on or off windows file sharing service.
- 3 Click [Save].

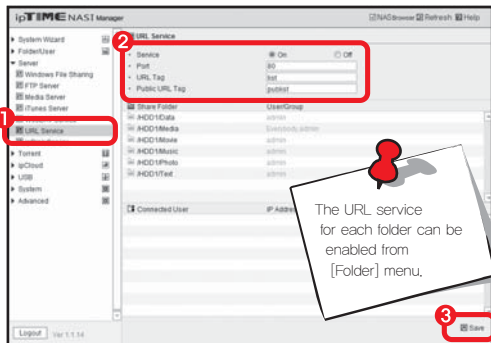
The windows file sharing service for each folder can be enabled from [Folder] menu.



B. FTP Server

- 1 Select [Server] > [FTP] menu.
- 2 Turn on or off FTP service.
- 3 Click [Save].

The FTP server service for each folder can be enabled from [Folder] menu.

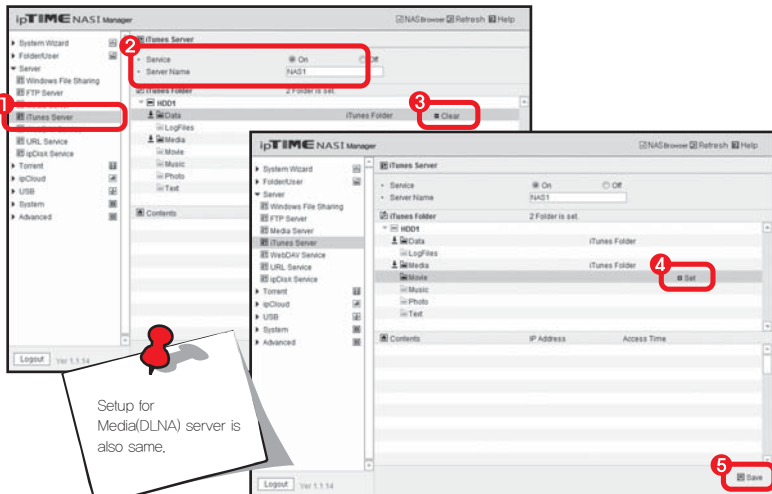


C. URL Service

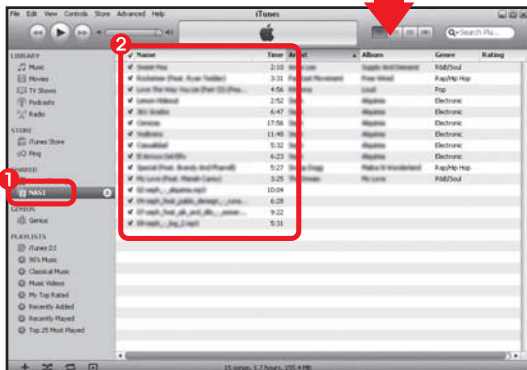
- 1 Select [Server] > [URL Service] menu.
- 2 Turn on or off URL service.
- 3 Click [Save].

The URL service for each folder can be enabled from [Folder] menu.

Five. iTunes service



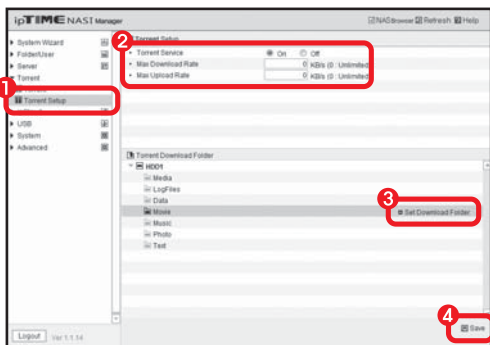
- 1 Select [Server] > [iTunes Server].
- 2 Enter iTunes server name and turn on it.
- 3 Select a folder and click [Set] icon to assign it as an iTunes folder.
Select a folder and click [Clear] icon to deassing it from the iTunes service.
- 4 Click [Save].



Run iTunes.

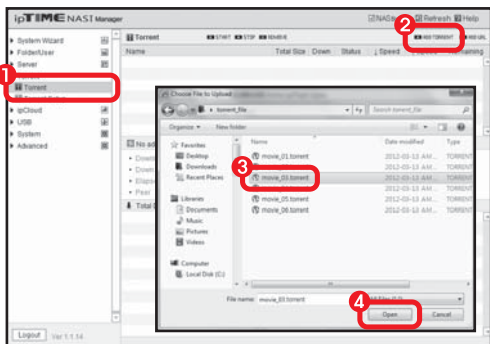
- 1 Select the [NAS1] previously assigned in web console of NAS.
- 2 The files placed in the folder previously assigned to iTunes will be shown.

Six. Torrent management



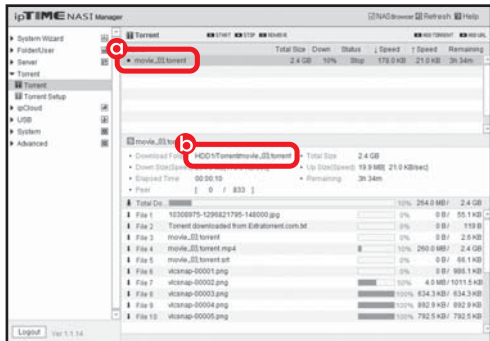
A. Setup Torrent

- 1 Select [Torrent] > [Torrent Setup] menu.
- 2 Turn on the Torrent service.
- 3 Select the folder where files will be downloaded and click [Set Download Folder].
- 4 Click [Save].



B. Using Torrent

- 1 Select [Torrent] > [Torrent] menu.
- 2 Click [ADD TORRENT] icon.
- 3 Select the torrent file for download.
- 4 Click [Open] to begin the download.



C. Viewing Status

- a The torrent file currently downloaded.
- b The download path.

Seven. Controlling FAN

1 Select [System] > [Misc] menu.

2 Select [HDD Temperature & FAN control].

3 Select FAN mode or speed as a, b or c.

4 Click [Save].

On-Line Help

※ Refer on-line manual for the menu not mentioned in this guide.

Click [Help] icon to see the on-line help.